

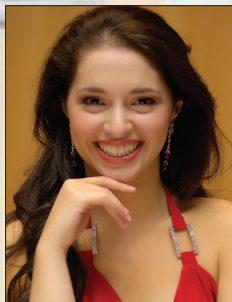
# MIKHAIL IVANOVICH GLINKA

## COMPLETE PIANO WORKS • 1

Glinka can justifiably be described as the fertile acorn from which grew the mighty oak of 19th century Russian national music. The graceful *Variations on a Theme by Mozart*, based on material from *The Magic Flute*, is remodelled so skilfully that it has effectively become an original theme. Fashionable salon pieces include the *Variations on Benadetta sia la madre*, an Italian romance, and *Variations on a Theme from Cherubini's Faniska*, an opera greatly admired by Glinka. In Milan he became famous for his ability to reproduce on the piano the nuances of the voices of the great singers of the day, giving rise to two entertaining sets of operatic variations on themes by Donizetti and Bellini. *The Variations on The Nightingale* represent his return to the Russian style.

- |          |   |       |
|----------|---|-------|
| <b>1</b> | VARIATIONS ON AN ORIGINAL THEME IN F MAJOR (1824)   | 11:48 |
| <b>2</b> | VARIATIONS ON A THEME FROM THE OPERA <i>FANISKA</i> BY CHERUBINI (1826-27)                                | 05:05 |
| <b>3</b> | VARIATIONS ON 2 THEMES FROM THE BALLET <i>CHAO-KANG</i> IN D MAJOR (1831)                                 | 05:22 |
| <b>4</b> | VARIAZIONI BRILLANTI ON A THEME FROM THE OPERA <i>ANNA BOLENA</i> BY DONIZETTI IN A MAJOR (1832)          | 11:50 |
| <b>5</b> | VARIATIONS ON A THEME FROM <i>DIE ZAUBERFLÖTE</i> BY MOZART IN E FLAT MAJOR (SECOND VERSION) (1856)       | 05:54 |
| <b>6</b> | VARIATIONS ON THE ROMANCE <i>BENEDETTA SIA LA MADRE</i> IN E MAJOR (1825)                                 | 13:42 |
| <b>7</b> | VARIATIONS ON THE RUSSIAN FOLK-SONG <i>SREDI DOLINĚ ROVNĚYA</i> (IN THE SHALLOW VALLEY) IN A MINOR (1826) | 02:57 |
| <b>8</b> | VARIATIONS ON A THEME FROM THE OPERA <i>I CAPULETI E I MONTECCHI</i> BY BELLINI IN C MAJOR (1832)         | 12:37 |
| <b>9</b> | VARIATIONS ON THE SONG <i>SOLOVEY</i> (THE NIGHTINGALE) BY ALABIEV IN E MINOR (1833)                      | 07:51 |

TOTAL PLAYING TIME: 77:06



INGA FOLIA

